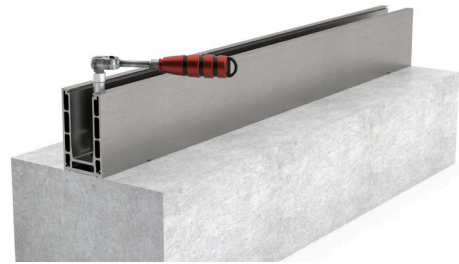
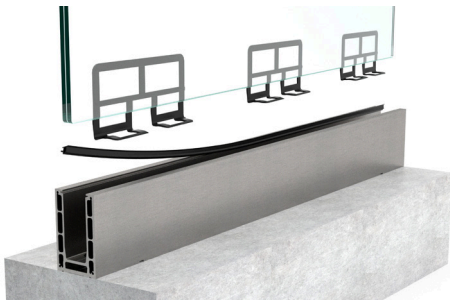


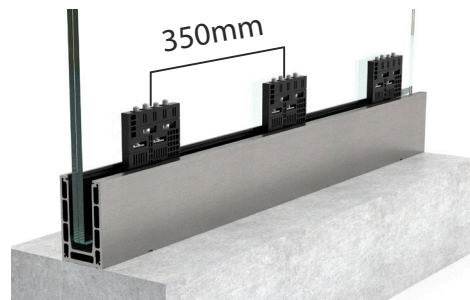
1. Drill, vacuum, insert glue and chemical anchor.



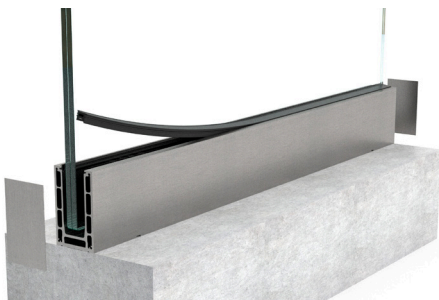
2. Place the profile and secure using a using a torque wrench set to 40 Nm.



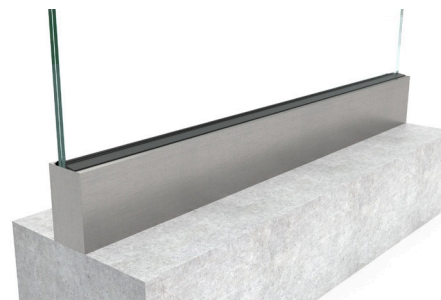
3. Place back rubber seal and back plastic insert and laminated glass.



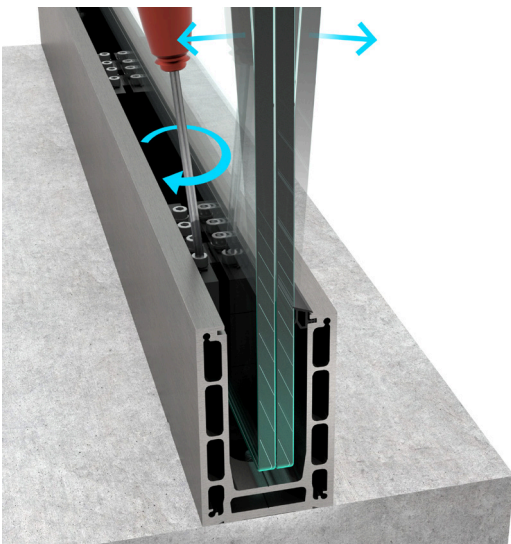
4. Insert the adjustable system and align the glass as shown in the bigger picture below.



5. Place front rubber, front and end covers.



6. Finished look.



Achieving a perfect glass alignment is easy. The two bolts without a washer tilt the glass towards you, and the two with a washer tilt it in the opposite direction. When perfect alignment is achieved - tighten all other bolts.